

Thermowells Part Numbers

CODE	STYLE
TW01	STD.THREADED STEPPED
TW02	STD.THREADED STRAIGHT
TW03	STD.THREADED TAPER
TW11	THREADED LAGGING STEPPED
TW12	THREADED LAGGING STRAIGHT
TW13	THREADED LAGGING TAPER
TW21	SOCKET WELD STEPPED
TW22	SOCKET WELD STRAIGHT
TW23	SOCKET WELD TAPER
TW24	SOCKET WELD LAGGING STEPPED
TW25	SOCKET WELD LAGGING STRAIGHT
TW26	SOCKET WELD LAGGING TAPER
TW27	WELD IN TAPER
TW28	WELD IN LAGGING TAPER
TW31	RF. FLGD. STEPPED
TW32	RF. FLGD. STRAIGHT
TW33	RF. FLGD. TAPER
TW34	RF. FLGD. LAGGING STEPPED
TW35	RF. FLGD. LAGGING STRAIGHT
TW36	RF. FLGD. LAGGING TAPER
TW41	FF. FLGD. STEPPED
TW42	FF. FLGD. STRAIGHT
TW43	FF. FLGD. TAPER
TW44	FF. FLGD. LAGGING STEPPED
TW45	FF. FLGD. LAGGING STRAIGHT
TW46	FF. FLGD. LAGGING TAPER
TW51	RTJ. FLGD. STEPPED
TW52	RTJ. FLGD. STRAIGHT
TW53	RTJ. FLGD. TAPER
TW54	RTJ. FLGD. LAGGING STEPPED
TW55	RTJ. FLGD. LAGGING STRAIGHT
TW56	RTJ. FLGD. LAGGING TAPER
TW61	VAN STONE STEPPED
TW62	VAN STONE STRAIGHT
TW63	VAN STONE TAPER
TW99	SANITARY OR TRI-CLAMP

CODE	BORE SIZE
A	0.26
B	0.385
C	0.515
D	0.203*
E	0.375
F	0.39
K	0.702*
X	SPECIAL*

*Large or Special bores will change stem outside diameter.

CODE	THREAD	WELD-IN	FLGD.	FLGD.
08	1/2" NPT			42 1" 300 lbs.
12	3/4" NPT			43 1 1/2" 300 lbs.
16	1" NPT			44 2" 300 lbs.
20	1 1/4" NPT			45 2 1/2" 300 lbs.
24	1 1/2" NPT			46 3" 300 lbs.
83		3/4" pipe		47 4" 300 lbs.
			1.05	50 1/2" 600 lbs.
84	1" pipe			51 3/4" 600 lbs.
		1.315		52 1" 600 lbs.
85		1 1/4" OD		53 1 1/2" 600 lbs.
86		1 1/2" OD		54 2" 600 lbs.
87		1 3/4" OD		55 2 1/2" 600 lbs.
30			1/2" 150 lbs.	56 3" 600 lbs.
31			3/4" 150 lbs.	57 4" 600 lbs.
32		1" 150 lbs.		60 1/2" 1500 lbs.
33			1 1/2" 150 lbs.	61 3/4" 1500 lbs.
34			2" 150 lbs.	62 1" 1500 lbs.
35			2 1/2" 150 lbs.	63 1 1/2" 1500 lbs.
36			3" 150 lbs.	64 2" 1500 lbs.
37			4" 150 lbs.	65 2 1/2" 1500 lbs.
40			1/2" 150 lbs.	66 3" 1500 lbs.
41			3/4" 300 lbs.	67 4" 1500 lbs.

CODE	OPTIONS
A	BRASS PLUG & CHAIN
B	STAINLESS PLUG & CHAIN
C	3/4" NPT INTERNAL THREAD
D	1" - 20 INTERNAL THREAD
E	1 1/4" - 18 INTERNAL THREAD
F	FULL PENETRATION WELD (FLANGED WELLS)
G	125/250 RMS FLANGE FINISH
H	4-12 RMS HIGH POLISH STEM FINISH
K	TANTALUM SHEATH (STRAIGHT STEM ONLY)
M	TEFLON COATING
N	KYNAR COATING
P	STELLITE OVER SPRAY
Q	HYDROSTATIC INTERNAL TESTING
R	STRESS RELIEVING
S	N.A.C.E. PER MR-10 90
T	DYE PENETRANT TEST
U	MATERIAL TEST REPORT (MTR)
V	VELOCITY CALCULATION (TAPERED WELLS ONLY)
Y	CLEANING O2 OR CHLORINE (SPECIFY)
Z	RADIOGRAPH
X	SPECIAL



1-800-259-6874
 23400 Hwy. 435, Abita Springs, LA 70420
www.northamericansensors.com - sales@mepinc.net

Thermowells Part Numbers

CODE	STEM MATERIAL
A	BRASS
B	NAVAL BRASS
C	ALUMINUM 6061
D	CARBON STEEL
E	CARBON STEEL ASTM A105
F	CHROME-MOLY F-11
G	CHROME-M MOLY F-22
H	304SS
J	304/L
K	310SS
L	316SS
M	316/L
N	347SS
O	ALLOY-20
P	INCONEL 600
Q	INCOLOY 800
R	MONEL 400
S	NICKEL 200
T	TITANIUM GR2
U	HASTALLOY C276
V	HASTALLOY B
W	TEFLON
Y	PVC
Z	KYNAR
X	SPECIAL

CODE	FLANGE MATERIAL
A	BRASS
B	NAVAL BRASS
C	ALUMINUM 6061
D	CARBON STEEL C1018
E	CARBON STEEL A105
F	CHROME-MOLY F-11
G	CHROME-M MOLY F-22
H	304SS
J	304/LSS
K	310SS
L	316SS
M	316/L
N	347SS
O	ALLOY-20
P	INCONEL 600
Q	INCOLOY 800
R	MONEL 400
S	NICKEL 200
T	TITANIUM
U	HASTALLOY C276
V	HASTALLOY B
W	TEFLON
Y	PVC
Z	KYNAR
X	SPECIAL

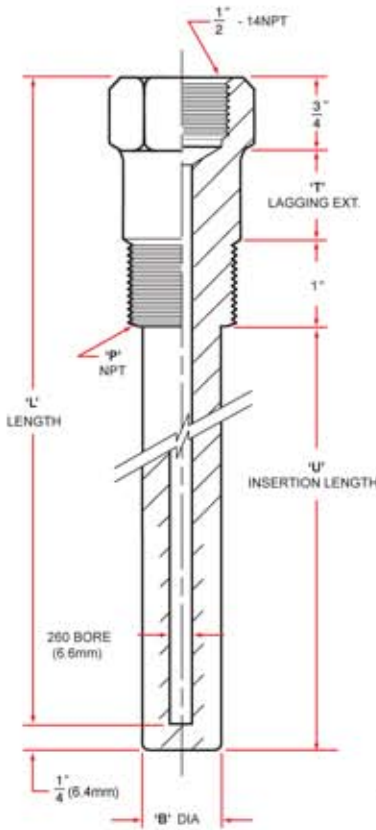
CODE LENGTH					
CODE	STEM LGTH.	STD/THR/D	THR/D LAG "U"	LAG OR T	FLANGED "U"
02	2 1/2"	1 5/8"			
04	4"	2 1/2"		2"	
06	6"	4 1/2"	2 1/2"	2"	4"
7.5	7 1/2"	6"	3"	3"	5 1/2"
09	9"	7 1/2"	4 1/2"	3"	7"
12	12"	10 1/2"	7 1/2"	3"	10"
15	15"	13 1/2"	10 1/2"	3"	13"
18	18"	16 1/2"	13 1/2"	3"	16"
24	24"	22 1/2"	19 1/2"	3"	22"
36	36"	31 1/2"	34 1/2"	3"	34"
42	42"	40 1/2"	37 1/2"	3"	40"

EXAMPLE	
TW33	FLANGED & TAPERED
A	.260 BORE
34	2" 150 lb. FLANGE
M	316/L
M	316/L
12	12" STEM
F	FULL PENETRATION WELD



1-800-259-6874
 23400 Hwy. 435, Abita Springs, LA 70420
www.northamericansensors.com - sales@mepinc.net

Thermowells Threaded Straight



Style
 Straight TW02
 Straight Lag TW11

Bore
 A 0.260
 B 0.385

Stem Length
 Please insert in Decimal Units

Options
 See Chart

- 1/2" NPT 08
- 3/4" NPT 12
- 1" NPT 16
- 1 1/4" NPT 20
- 1 1/2" NPT 24

Process Size

See Chart
 Stem Material

'B' Diameter:

- 1/2" NPT- 5/8"
- 3/4" NPT- 3/4"
- 1" NPT- 3/4"

Example:

TW11 Lagged Straight
A 0.260
12 3/4" NPT
L 316SS
06 6" Stem
B SS Plug & Chain

***Note for lag (T)**

if (L) is over 6", the industry std. for (T) is 3"
 if (L) is under 6", the industry std. for (T) is 2"

Material Chart:

- A Brass
- D Carbon Steel
- E A105
- F F11
- G F22
- H 304
- J 304/L
- L 316
- M 316/L
- R Monel
- T Titanium
- U Hast. C

See full chart for more material codes.

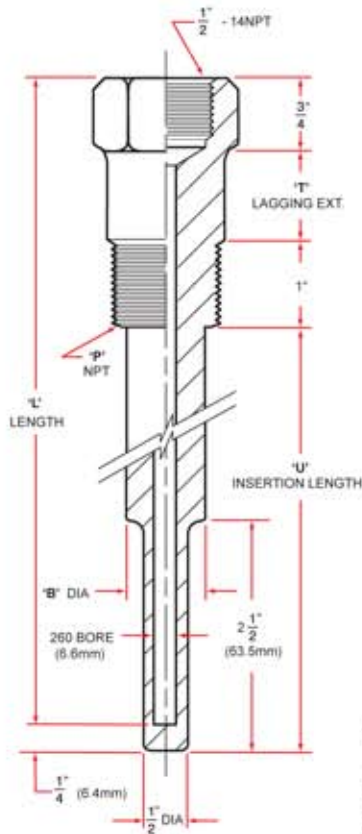


1-800-259-6874

23400 Hwy. 435, Abita Springs, LA 70420

www.northamericansensors.com - sales@mepinc.net

Thermowells Threaded Stepped



Style	Bore	Stem Length	Options
Stepped TW01	A 0.260	Please insert in Decimal Units	See Chart
Stepped Lag TW11	B 0.385		

--	--	--	--	--	--

- 1/2" NPT 08
- 3/4" NPT 12
- 1" NPT 16
- 1 1/4" NPT 20
- 1 1/2" NPT 24

Process Size

See Chart
Stem Material

'B' Diameter:

- 1/2" NPT- 5/8"
- 3/4" NPT- 3/4"
- 1" NPT- 7/8"

Example:

TW11 Lagged Stepped
A 0.260
12 3/4" NPT
L 316SS
06 6" Stem
B SS Plug & Chain

***Note for lag (T)**

if (L) is over 6", the industry std. for (T) is 3"

if (L) is under 6", the industry std. for (T) is 2"

Material Chart:

- A Brass**
- D Carbon Steel**
- E A105**
- F F11**
- G F22**
- H 304**
- J 304/L**
- L 316**
- M 316/L**
- R Monel**
- T Titanium**
- U Hast. C**

See full chart for more material codes.



1-800-259-6874

23400 Hwy. 435, Abita Springs, LA 70420

www.northamericansensors.com - sales@mepinc.net