

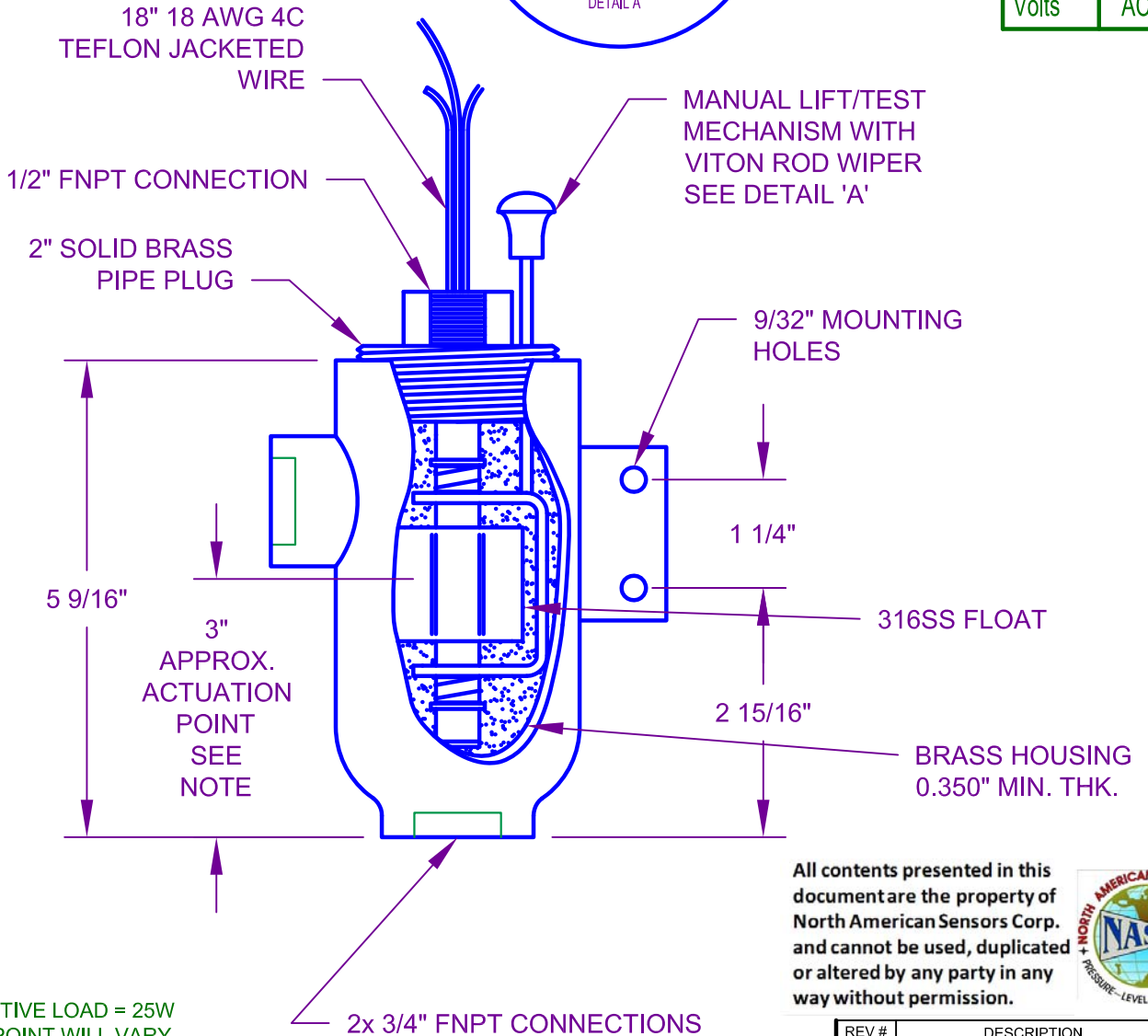
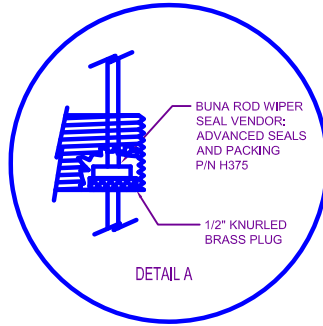
WIRING LOGIC

ABS CERTIFICATE #01-HS244935/1-PDA

SWITCH RATED SPDT 25VA

RED - N.O.
 BLACK - N.C.
 WHITE - COMMON
 GREEN - GROUND

Max. Temp.	225°F
Max. PSIG	100
Float SG	.62
Watt Rating	25 AC/DC
Max Volts	120 AC/DC



All contents presented in this document are the property of North American Sensors Corp. and cannot be used, duplicated or altered by any party in any way without permission.



NOTE:
 1. MAX. WATT RESISTIVE LOAD = 25W
 2. THE ACUTATION POINT WILL VARY DEPENDING ON THE TEMPERATURE & SPECIFIC GRAVITY OF THE LIQUID BEING DETECTED.

REV #	DESCRIPTION	
1	CORRECTED SPELLING	
DWG # BTL150 25BBS R1		
MODEL # BTL150/25BBS		
REV BY: MPM	DATE: 10/22/08	DWG BY TLR
REV DATE: 11/25/13	REV 1	APPROVED BY FCB



NORTH AMERICAN SENSORS CORP.
 23400 HIGHWAY 435
 ABITA SPRINGS, LA 70427
 985-893-0909 985-893-0807

BOTTLE SWITCH MODEL BTL150/BBS IS DESIGNED TO BE INSTALLED EXTERNAL TO SHIPS AND INDUSTRIAL TANKS. IT MAY BE BOLTED TO ADJOINING STRUCTURE. THIS SWITCH IS PRIMARILY BRASS CONSTRUCTION WITH A STAINLESS STEEL FLOAT AND A HERMETICALLY SEALED SPDT REED SWITCH. THIS SWITCH IS ALSO DESIGNED WITH A SPEICAL FEATURE, MANUAL LIFT/PULL TEST MECHANISM TO BE USED IN THE FIELD TO DETERMINE IF THE SWITCH IS OPERATIONAL. SPECIFICATIONS MAY CHANGE WITHOUT NOTICE.