

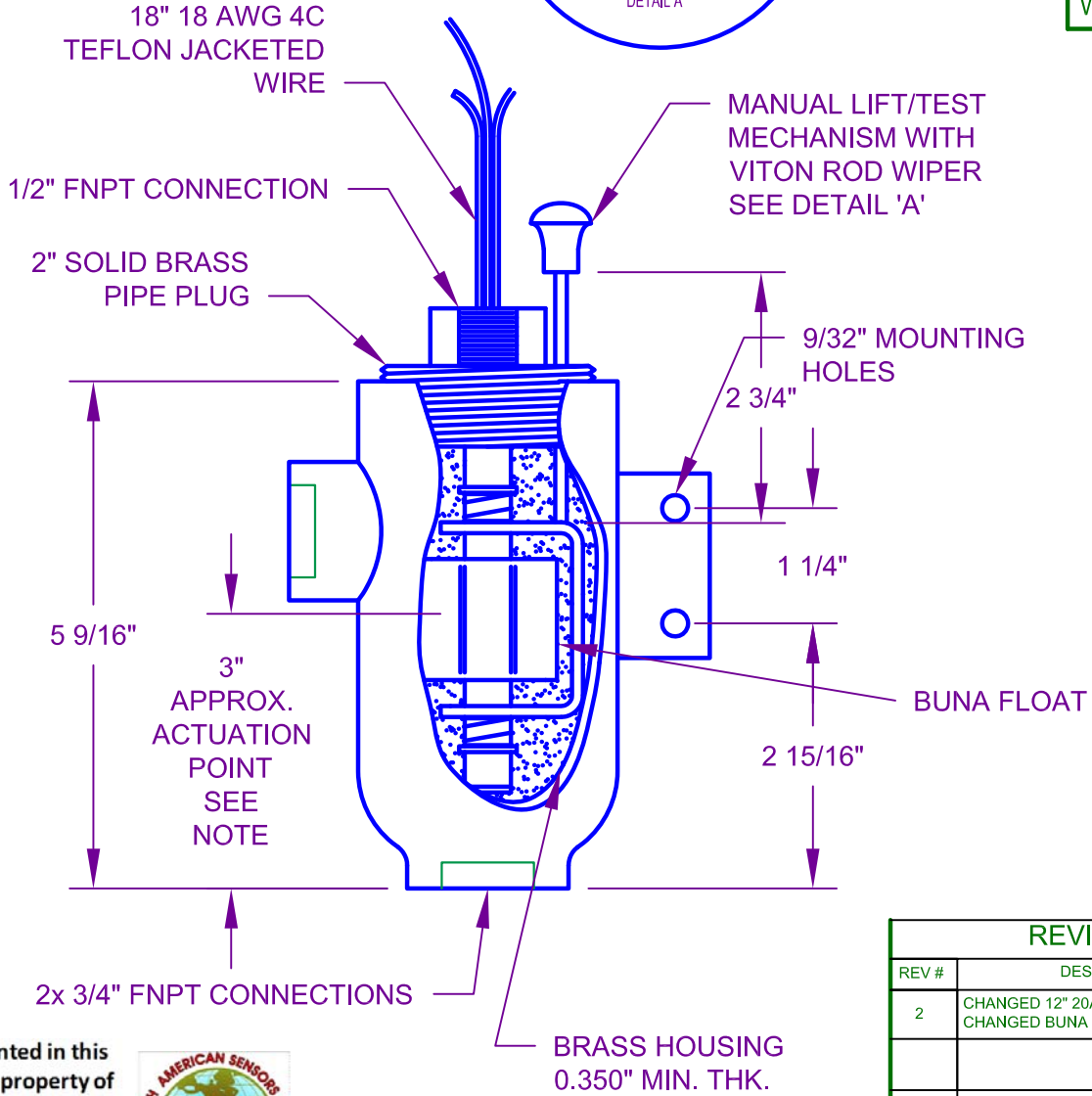
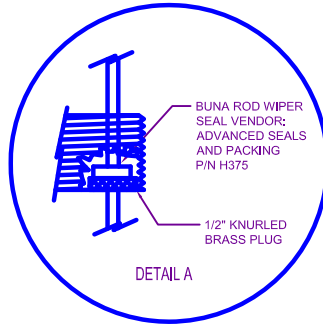
WIRING LOGIC

SWITCH RATED SPDT 25VA

RED - N.O.
BLACK - N.C.
WHITE - COMMON
GREEN - GROUND

ABS CERTIFICATE #01-HS244935/1-PDA

Max. Temp.	225°F
Max. PSIG	100
Float SG	.48
Watt Rating	25 AC/DC
Max Volts	120 AC/DC



All contents presented in this document are the property of North American Sensors Corp. and cannot be used, duplicated or altered by any party in any way without permission.



NORTH AMERICAN SENSORS CORP.
23400 HIGHWAY 435
ABITA SPRINGS, LA 70427
985-893-0909 985-893-0807

NOTE:
1. MAX. WATT RESISTIVE LOAD = 25W
2. THE ACUTATION POINT WILL VARY DEPENDING ON THE TEMPERATURE & SPECIFIC GRAVITY OF THE LIQUID BEING DETECTED.

REVISIONS	
REV #	DESCRIPTION
2	CHANGED 12" 20AWG TO 18" 18AWG. CHANGED BUNA WIPER TO VITON WIPER
DWG # BTL150/25BBN R1	
MODEL # BTL150/25BBN	
DATE: 4/21/09	DWG BY TLR
REV 2	APPROVED BY FCB
REV DATE: 11/11/13	REV BY: MPM

BOTTLE SWITCH MODEL BTL150/BBN IS DESIGNED TO BE INSTALLED EXTERNAL TO SHIPS AND INDUSTRIAL TANKS. IT MAY BE BOLTED TO ADJOINING STRUCTURE. THIS SWITCH IS PRIMARILY BRASS CONSTRUCTION WITH A BUNA FLOAT AND A HERMETICALLY SEALED SPDT REED SWITCH. THIS SWITCH IS ALSO DESIGNED WITH A SPEICAL FEATURE, MANUAL LIFT/PULL TEST MECHANISM TO BE USED IN THE FIELD TO DETERMINE IF THE SWITCH IS OPERATIONAL. SPECIFICATIONS MAY CHANGE WITHOUT NOTICE.